

Texas has long been committed to our military bases and the personnel who call the Lone Star State home. That's why we're often recognized for our military friendliness. From training troops and maintaining military equipment to caring for our wounded and overseeing defense contracts, our installations provide both economic and intangible benefits.

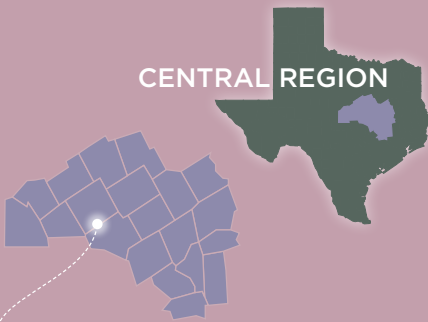
As the state's chief financial officer, I appreciate the military's contribution to our economy: \$136.4 billion in total output and a contribution of \$81.3 billion to gross domestic product annually. Our military installations employ 804,268 Texans in some capacity, contributing nearly \$48 billion of disposable personal income for our citizens.

But as with other sectors of the Texas economy, our bases can experience change and uncertainty. By detailing the economic impact of our 15 military installations, we hope to emphasize their importance to strong, diverse and growing regional economies.



**Glenn Hegar**  
Texas Comptroller of Public Accounts

## ABOUT FORT HOOD



**FORT HOOD** is the largest active-duty armored post in the U.S. military and home to the III Corps Command Group, also known as "The Phantom Warriors" or "America's Hammer."

- The 1st Cavalry Division, the 3rd Armored Cavalry Regiment, the 3rd Armored Corps Artillery and the 13th Corps Support Command also call Fort Hood home.
- Fort Hood has deployed and redeployed more than 852,000 soldiers in support of overseas military operations since 2003.
- In January, Fort Hood broke ground on the Army's largest renewable energy project, an on-post solar farm with 63,000 solar panels and an off-site wind turbine farm capable of generating 40% of the installation's energy needs.

Source: Fort Hood

## ESTIMATED CONTRIBUTIONS OF FORT HOOD TO THE TEXAS ECONOMY, 2015

### DIRECT EMPLOYMENT

**60,159**

**\$35.4** OUTPUT  
Billion

### DIRECT AND INDIRECT EMPLOYMENT

**201,538**

### GROSS DOMESTIC PRODUCT

**\$21.0** Billion

Source: Texas Comptroller of Public Accounts

Fort Hood occupies more than **217,000 ACRES** in Bell and Coryell counties.

It could encompass most of the area of these cities combined:

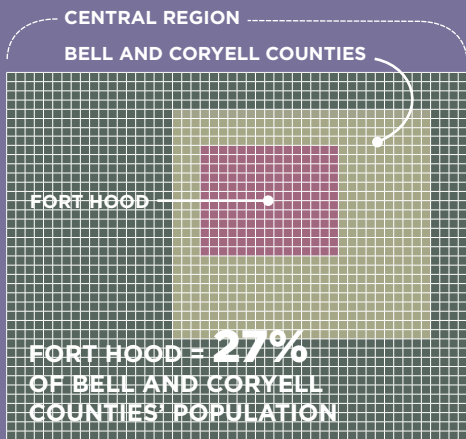
**FORT HOOD HAS THE MOST EMPLOYEES ON A SINGLE SITE IN THE STATE OF TEXAS**

Source: Fort Hood

**FORT HOOD**  
Waco Killeen Bryan  
College Station Temple Belton

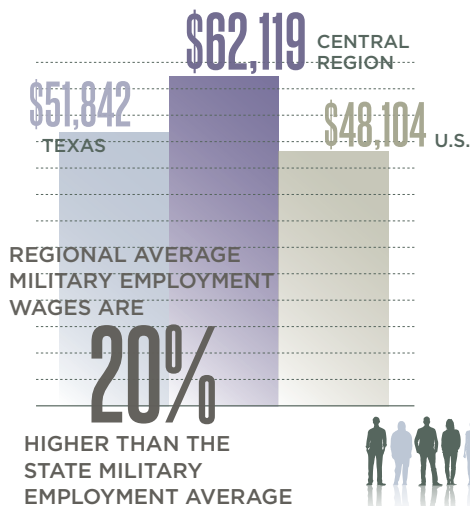
Source: Fort Hood and Map Technica

## POPULATION ASSOCIATED WITH FORT HOOD



Source: U.S. Census Bureau and Texas Comptroller of Public Accounts

## AVERAGE MILITARY WAGES, 2014



Source: Economic Modeling Specialists Intl. and Texas Comptroller of Public Accounts

MORE THAN ONE OUT OF EVERY FOUR PEOPLE IN BELL AND CORYELL COUNTIES IS ASSOCIATED WITH FORT HOOD.

THEY ARE EMPLOYEES (MILITARY, CIVILIAN AND CONTRACTOR), FEDERAL TENANTS, RETIREES AND FAMILY MEMBERS.

Source: Fort Hood and U.S. Census Bureau

## JOB AND WAGE GROWTH

### MILITARY EMPLOYMENT AS SHARE OF TOTAL REGIONAL EMPLOYMENT, 2014

REGION	2014 SHARE
ALAMO	3.4%
CAPITAL	0.5%
<b>CENTRAL</b>	<b>9.2%</b>
GULF COAST	0.5%
HIGH PLAINS	0.5%
METROPLEX	0.5%
NORTHWEST	4.8%
SOUTH	1.3%
SOUTHEAST	0.7%
UPPER EAST	0.5%
UPPER RIO GRANDE	8.9%
WEST	1.5%
<b>TEXAS</b>	<b>1.5%</b>
<b>UNITED STATES</b>	<b>1.4%</b>

Source: Texas Comptroller of Public Accounts

From 2004 to 2014, Central Region military average wages grew by:

**\$19,865**

OR

**47.0%**

FORT HOOD SUPPORTS THE ARMY'S LARGEST CONCENTRATION OF ARMORED MILITARY CAPABILITIES.

Source: Fort Hood

Fort Hood has a rich history:

- **IT WAS ESTABLISHED IN 1941 AS CAMP HOOD FOR TRAINING THE ARMY'S TANK DESTROYER BATTALIONS.**
- **NAMED FOR GENERAL JOHN BELL HOOD, WHO COMMANDED THE TEXAS BRIGADE IN THE CIVIL WAR.**
- **FORT HOOD BECAME A PERMANENT MILITARY INSTALLATION IN 1950.**

Source: Fort Hood

## CONCLUSION

While the Army has announced plans to reduce 3,350 soldiers from Fort Hood's active component population by 2017, the installation will remain a significant economic driver for the Central Region. Fort Hood contributes

to the livelihood of a large portion of people in the area, and has made the Central Region a Texas military hub.

Fort Hood will continue its critical role as the only post in the U.S. capable of stationing and training two full armored divisions within its 340 square miles.

Yet the importance and impact of Fort Hood isn't limited to the military and its Central Texas community. With its size and prominence, Fort Hood is an economic boon to the state, and contributes at least **\$35.4 BILLION** to the Texas economy.

### FORT HOOD IS ONE OF 15 MAJOR TEXAS MILITARY INSTALLATIONS.

To see a complete list of these installations, plus more in-depth regional and county-by-county data, visit:

[TEXASAHEAD.ORG/ECONOMIC-DATA/MILITARY](http://TEXASAHEAD.ORG/ECONOMIC-DATA/MILITARY)